



Downtown Burbank San Fernando Boulevard Reconfiguration

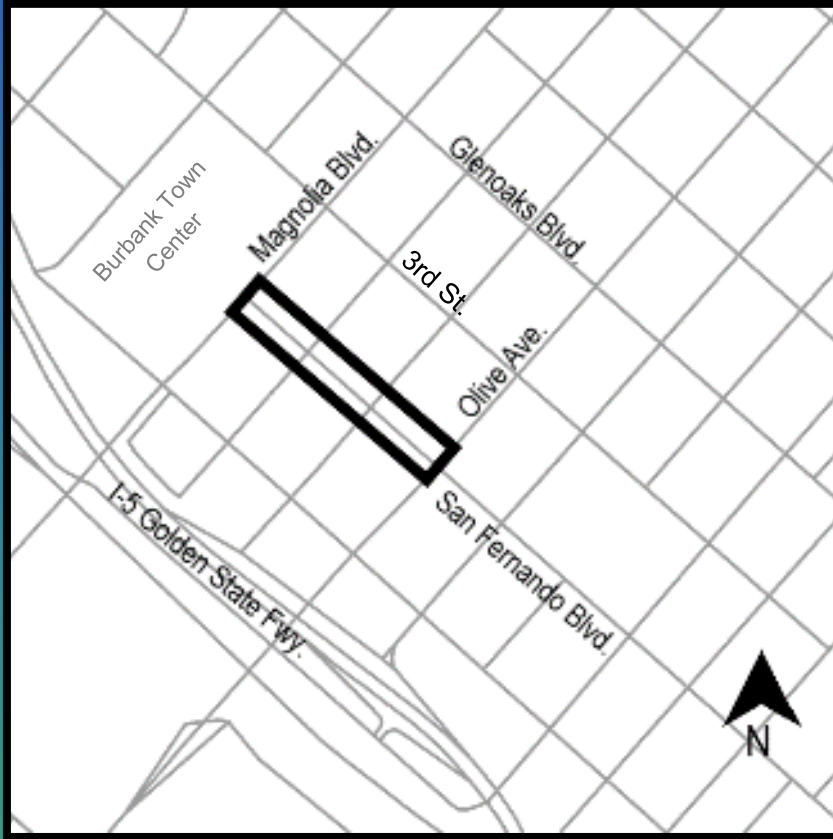
Phase 1

City Council
January 24, 2023



**COMMUNITY
DEVELOPMENT**

Background



- Project consists of two phases
- Project goal: Enhance safety for all modes of transportation
- Project area: San Fernando Blvd., between Olive Ave. and Magnolia Blvd.
- Change vehicular flow of traffic to be one-way only traveling northbound on San Fernando Blvd.

Background



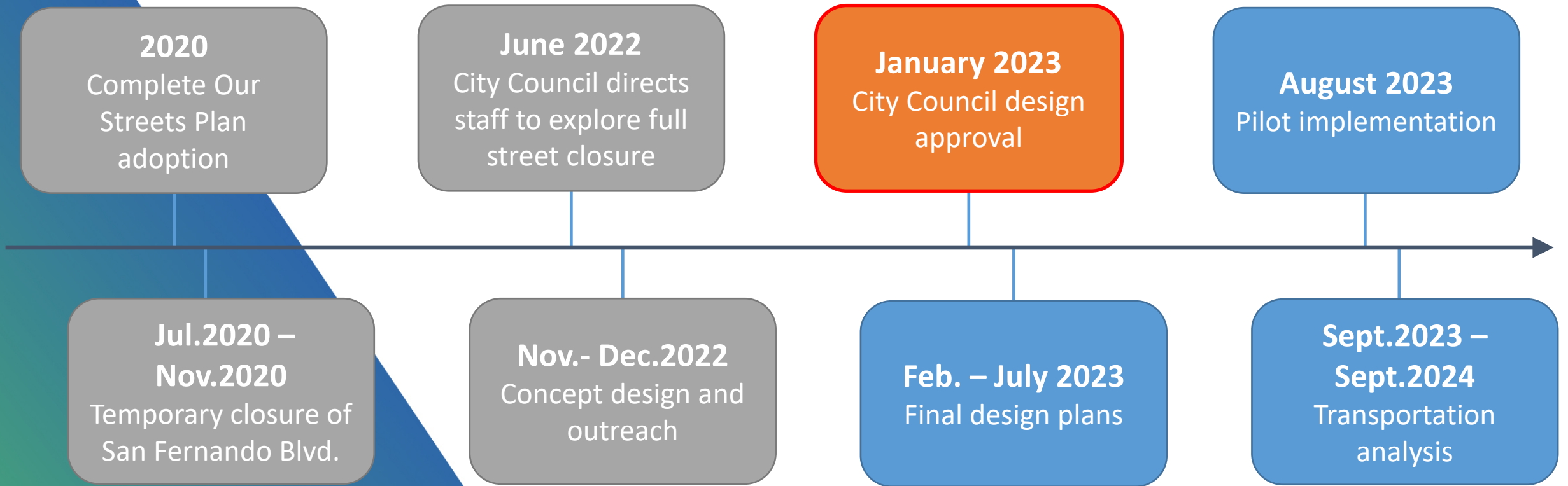
- This supports other City planning efforts:
 - Burbank2035 General Plan
 - Downtown Burbank Transit Oriented District Specific Plan
 - Proposed NoHo to Pasadena BRT
- Phase 1 would be a short-term test project, 12-month pilot

Project Benefits



- Reduce conflict points between vehicles and pedestrians
- Slow vehicle speeds
- Reduce pedestrian exposure
- Wider sidewalk areas
- Better access to on-street parking
- Support continuation of outdoor dining parklets

Project Milestones



Existing Conditions

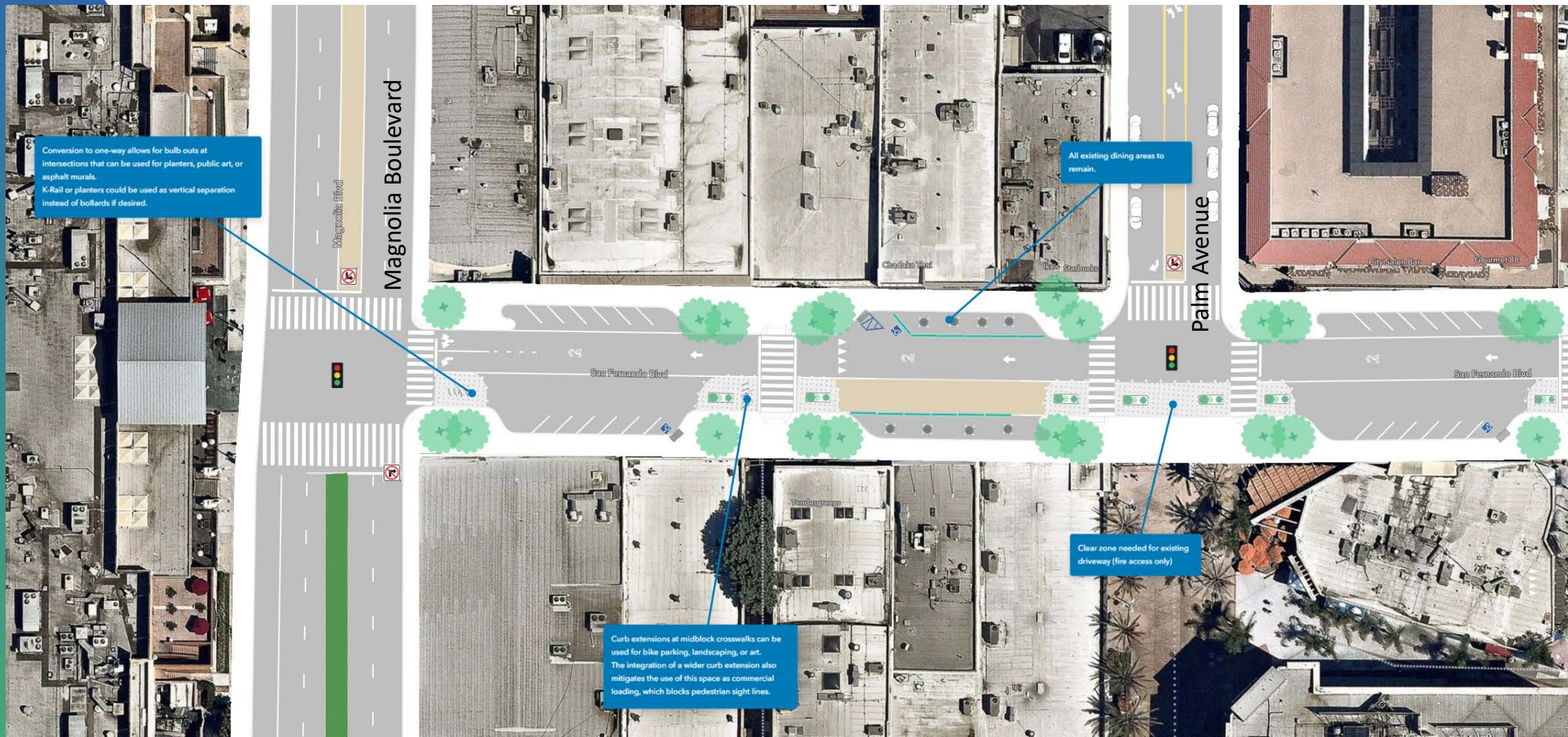


Existing Conditions Issues



- No designated loading parking space
- Illegal parking
- Double parking
- Poor line of sight at mid-block crossings
- Poor crosswalk yield compliance
- Illegal U-turns

One-way Traffic



Conversion to one-way allows for bulb outs at intersections that can be used for planters, public art, or asphalt murals. K-Rail or planters could be used as vertical separation instead of bollards if desired.

All existing dining areas to remain.

Curb extensions at midblock crosswalks can be used for bike parking, landscaping, or art. The integration of a wider curb extension also mitigates the use of this space as commercial loading, which blocks pedestrian sight lines.

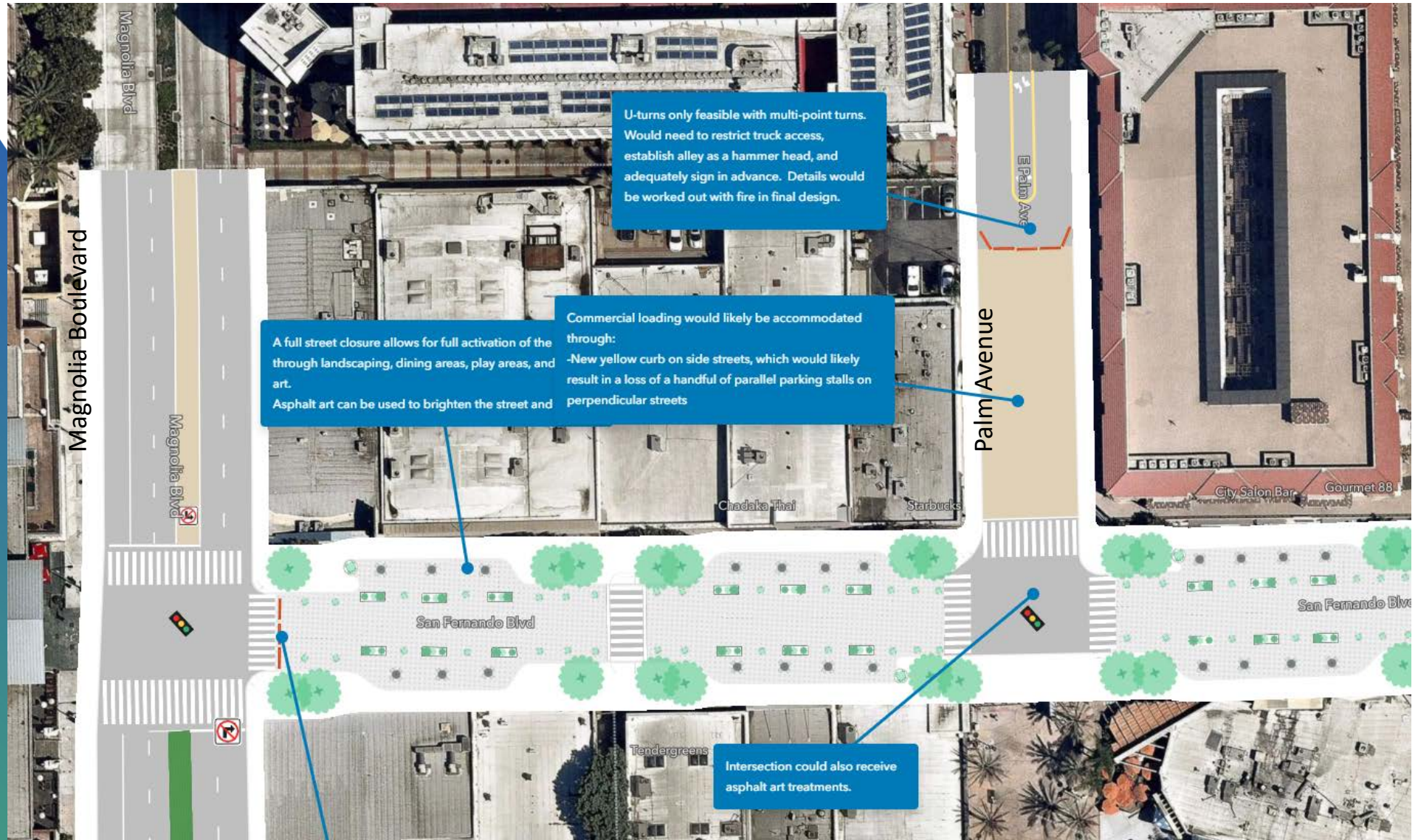
Clear zone needed for existing driveway (fire access only)

One-way Traffic



Conceptual rendering of the one-way design alternative at the intersection of San Fernando Boulevard and Palm Avenue, facing northbound

Full Street Closure





Project Public Input in 2022

- **November 3rd**
 - - Property Business Improvement District
- **November 9th**
 - Community Meeting
- **November 21st**
 - Transportation Commission Meeting
- **December 1st**
 - Community Meeting
- **December 2nd**
 - Downtown Burbank Cultural Market
- **December 3rd**
 - Downtown Burbank Farmer's Market

Staff Recommendation: One-way Traffic



Conceptual rendering of the one-way reconfiguration design of San Fernando Boulevard, between Magnolia Boulevard and Palm Avenue, facing northbound

- Balanced approach to improving safety
- Lower risk of traffic collisions
- Retains existing on-street parking
- Improves curb management
- Opportunities to fully close street during special events

Staff Recommendation:

One-way option provides same benefits without negative impacts of full street closure



Source: Fox 11 Los Angeles

- Restricts access to commercial businesses
- Requires significant programming to attract visitors while discouraging nuisance street uses
- Additional resources, funding and staff time would be needed for a full street closure
- Exacerbates impacts to adjacent parking garages and loading areas
- San Fernando businesses oppose a full street closure



Staff Recommendation and Next Steps

- Staff recommends the approval of the One-way conceptual design
- Improve walkability and quality of life of resident and visitors of Downtown Burbank
- Next steps: finalized engineering designs and implement in August 2023
- 12-month pilot, post implementation analysis, and further recommendations for second phase in September/October 2024



Questions?

Marcos Fuentes

Senior Transportation Planner

(818) 238-5270

mfuentes@burbankca.gov