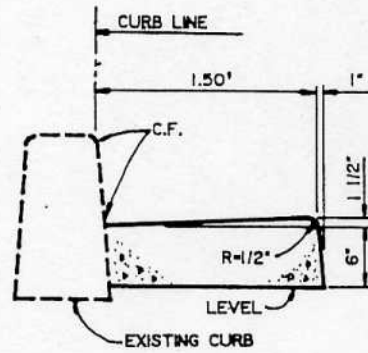
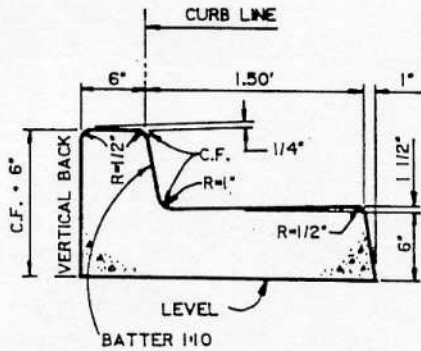


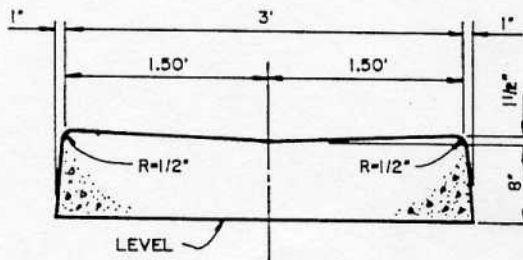
**CURB DETAIL**



**GUTTER DETAIL**



**INTEGRAL CURB & GUTTER DETAIL**



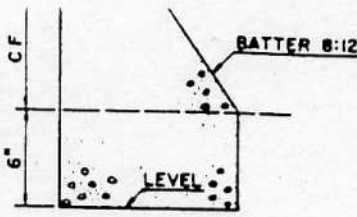
**LONGITUDINAL GUTTER DETAIL**

**NOTES:**

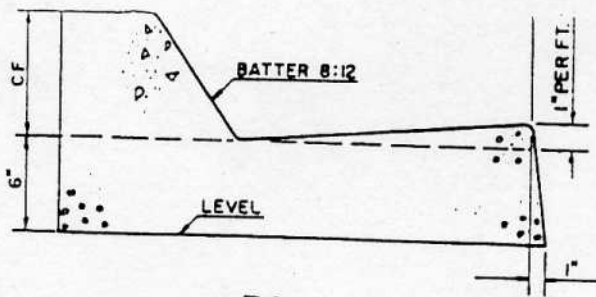
1. ALL WORK SHALL BE CONSTRUCTED IN ACCORDANCE WITH THE LATEST ADOPTED STANDARD SPECIFICATIONS FOR PUBLIC WORKS CONSTRUCTION.
2. THE TOP AND FRONT FACE OF CURB HAVE A STEEL TROWEL FINISH, ALL GUTTERS SHALL HAVE A STEEL TROWEL FINISH FOR 4" ADJACENT TO THE FLOW LINE, THE REMAINDER SHALL HAVE A ROUGH BROOM FINISH WITH A 4" STEEL TROWEL FINISH AT THE OUTSIDE EDGE AND AT EXPANSION JOINTS.
3. PRE-FORMED EXPANSION JOINT, 1/2" THICK, SHALL BE INSTALLED IN ALL TYPES OF CURB AND GUTTER AT INTERVALS NOT TO EXCEED 25'. IDENTICAL JOINTS SHALL BE INSTALLED AT THE BEGINNING AND END OF ALL CURVES, AT ONE FOOT BEYOND THE TOP OF 'X' OF DRIVEWAYS, AND BOTH ENDS OF CROSS GUTTERS.
4. CONCRETE SHALL BE CLASS 520-C-2500
5. CONCRETE CURB MAY BE CONSTRUCTED INTEGRALLY WITH CONCRETE PAVEMENT OR CONCRETE ALLEY APPROACHES.
6. CF IS 7" UNLESS OTHERWISE SPECIFIED.
7. WHERE EXISTING GUTTER WIDTH IS 2', A 2' WIDE GUTTER WITH 2" HIKE-UP MAY BE PERMITTED TO MATCH EXISTING.
8. WHERE NEW CURB IS ADJACENT TO EXISTING SIDEWALK; SIDEWALK SHALL BE REMOVED AND REPLACED TO NEAREST SCORELINE.

**CITY OF BURBANK - PUBLIC WORKS DEPARTMENT**

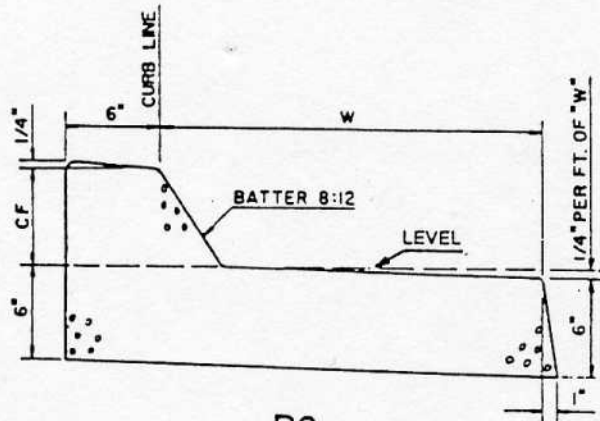
REV	BY	DATE	CURB AND GUTTER	STANDARD PLAN



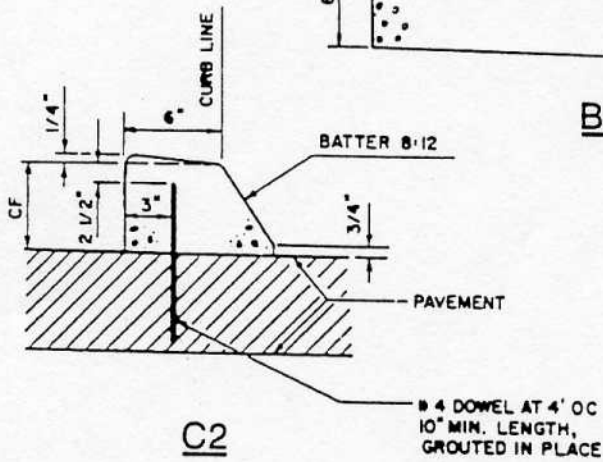
B1



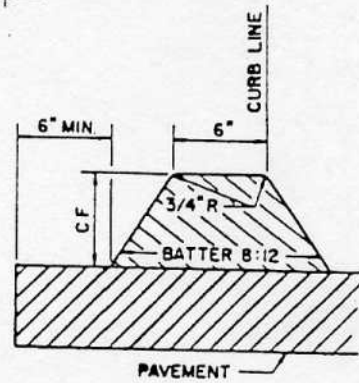
B2



B3



C2



D2

NOTES:

1. ALL DIMENSIONS ARE MEASURED IN INCHES.
2. "CF" IS 6" UNLESS OTHERWISE SPECIFIED.
3. "W" IS 12" UNLESS OTHERWISE SPECIFIED.
4. TYPES B1, B2, B3 AND C2 ARE CONSTRUCTED OF PORTLAND CEMENT CONCRETE, (CLASS 520 - C - 2500)
5. TYPE D2 IS CONSTRUCTED OF ASPHALT CONCRETE.
6. TYPE C2 CURB SHALL BE ANCHORED WITH DOWELS AS SHOWN OR WITH EPOXY APPROVED BY THE ENGINEER.
7. GRADE SHALL BE MEASURED AT CURB LINE AT TOP OF CURB.
8. ALL EXPOSED CORNERS ON P.C.C. CURBS AND GUTTERS TO BE ROUNDED WITH A 1/2" RADIUS.