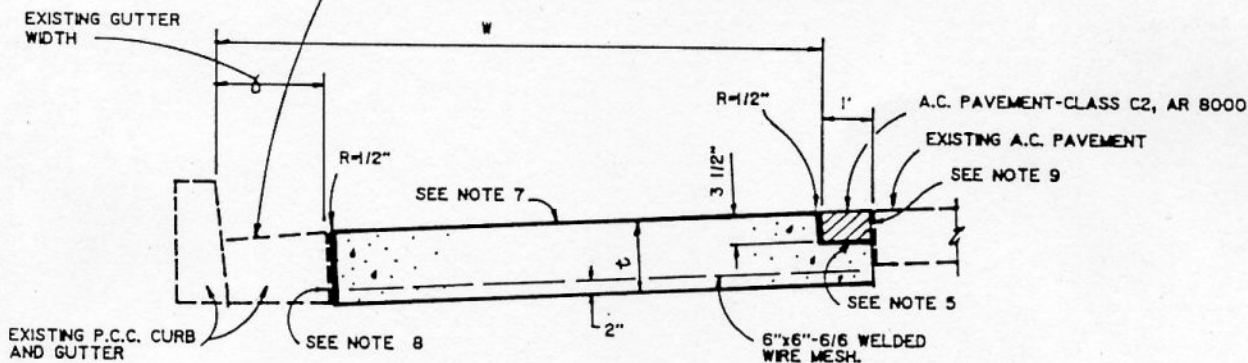
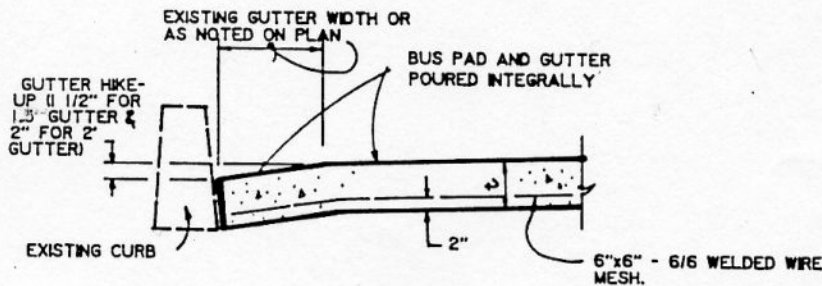


**CASE I**  
**(EXISTING CURB, GUTTER AND A.C. PAVEMENT)**  
**PLAN**  
 NO SCALE

WHERE EXISTING CONCRETE GUTTER IS REMOVED CONSTRUCT BUS PAD AND GUTTER INTEGRALLY AS SHOWN ON "NEW GUTTER DETAIL" BELOW.



**SECTION A - A**  
 NO SCALE



**NEW GUTTER DETAIL**  
 NO SCALE

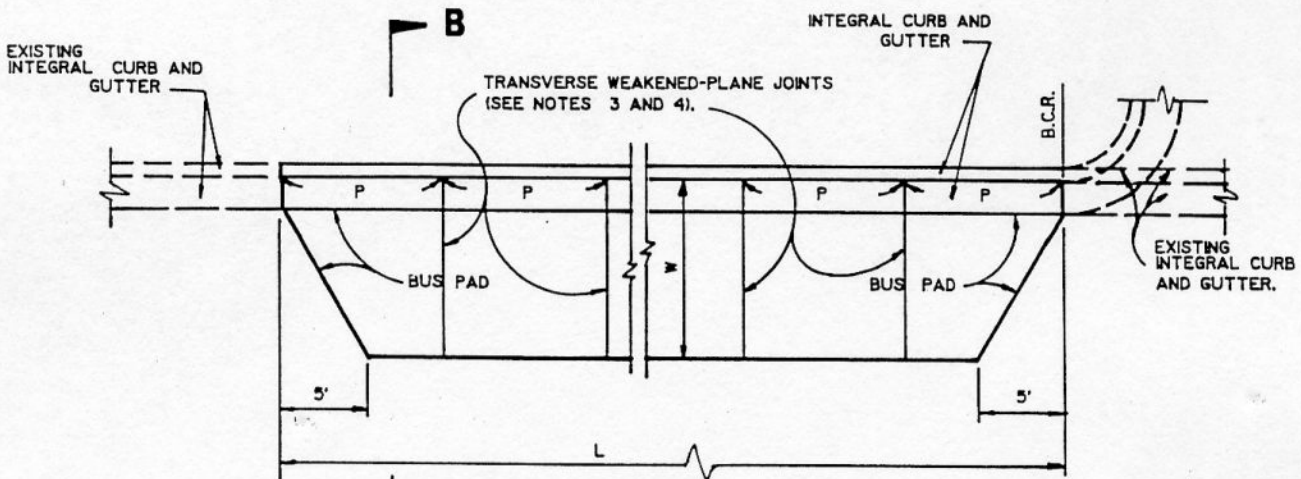
**CITY OF BURBANK - PUBLIC WORKS DEPARTMENT**

REV	BY	DATE

**BUS PAD**

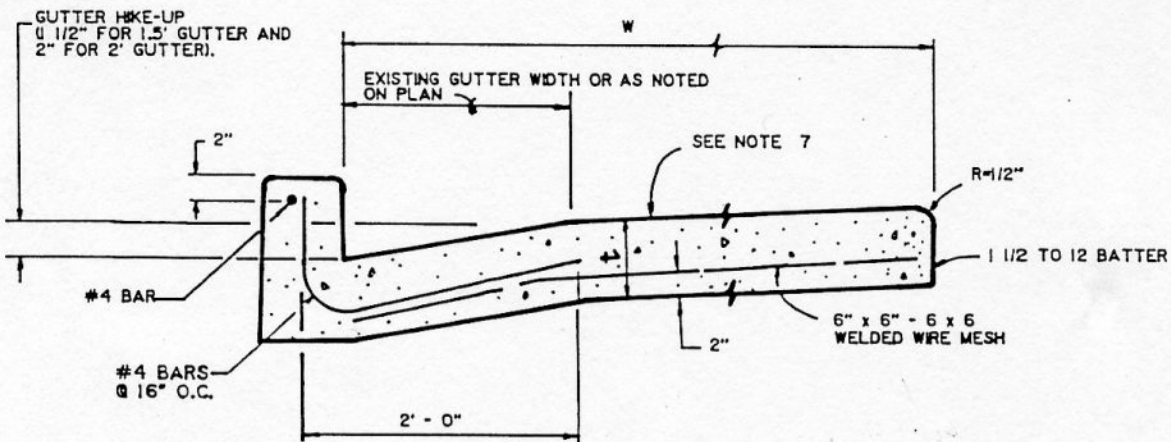
APPROVED BY: *[Signature]* **6-1-92**  
 Public Works Director Date

STANDARD PLAN  
**BS-112**



**CASE II**  
**(NEW CURB, GUTTER AND PAVEMENT)**

**PLAN**  
 NO SCALE



**SECTION B - B**  
 NO SCALE

**CITY OF BURBANK - PUBLIC WORKS DEPARTMENT**

REV	BY	DATE

**BUS PAD**

STANDARD PLAN

APPROVED BY:

*[Signature]*  
 Public Works Director

6-1-92

Date

BS-112

SHEET 2 OF 2

**NOTES:**

1. DIMENSION:           L = 80'  
 (UNLESS                t = 8"  
 OTHERWISE            W = 10'  
 SPECIFIED)           P = 12' MINIMUM TO 15' MAXIMUM, EQUALLY SPACED.
2. CONCRETE FOR BUS PAD SHALL BE CLASS 560-A-3250 EXCEPT, WHEN BUS PAD IS POURED MONOLITHIC WITH CURB AND GUTTER, CONCRETE SHALL BE CLASS 560-C-3250.
3. WHEN POUR IS INTEGRAL ,EXTEND SAWCUT INTO CURB.
4. TRANSVERSE WEAKENED-PLANE JOINTS SHALL BE SAWCUT TO A DEPTH OF 1 1/2 INCHES. SEALANT AND DOWELS ARE NOT REQUIRED.
5. USE 2"X4" HEADER TO FORM 3 1/2 INCH STEP SHOWN IN SECTION A-A. TOP OF HEADER SHALL BE SET TO LINE AND GRADE
6. WHERE DESIGNATED BY THE ENGINEER IN THE FIELD, UNDESIRABLE SUBGRADE MATERIAL SHALL BE REMOVED AND REPLACED WITH CRUSHED AGGREGATE BASE.
7. THE SURFACE OF THE CONCRETE SHALL HAVE A ROUGH BROOM FINISH (TRANSVERSE).
8. AT ALL LOCATIONS WHERE 8" P.C.C. PAVEMENT WILL BE ABUTTING AGAINST EXISTING CONCRETE STRUCTURES, AN EPOXY APPROVED BY THE CITY ENGINEER SHALL BE APPLIED ON THE SURFACES PRIOR TO POURING OF THE CONCRETE.
9. AT THE OPTION OF THE ENGINEER, THE EXISTING PAVEMENT WILL BE NEATLY SAWCUT AROUND THE DIMENSIONS OF THE BUS PAD AND CONCRETE IS POURED DIRECTLY USING THE EXISTING PAVEMENT AS A FORM. THE CONCRETE EDGES SHALL BE FINISHED WITH 1/4"-INCH ROUND.
10. WHERE NEW CURB IS ADJACENT TO EXISTING SIDEWALK, SIDEWALK SHALL BE REMOVED AND REPLACED TO NEAREST SCORELINE.

**CITY OF BURBANK - PUBLIC WORKS DEPARTMENT**

REV	BY	DATE	BUS PAD	STANDARD PLAN
			Public Works Director	SHEET 2 OF 2