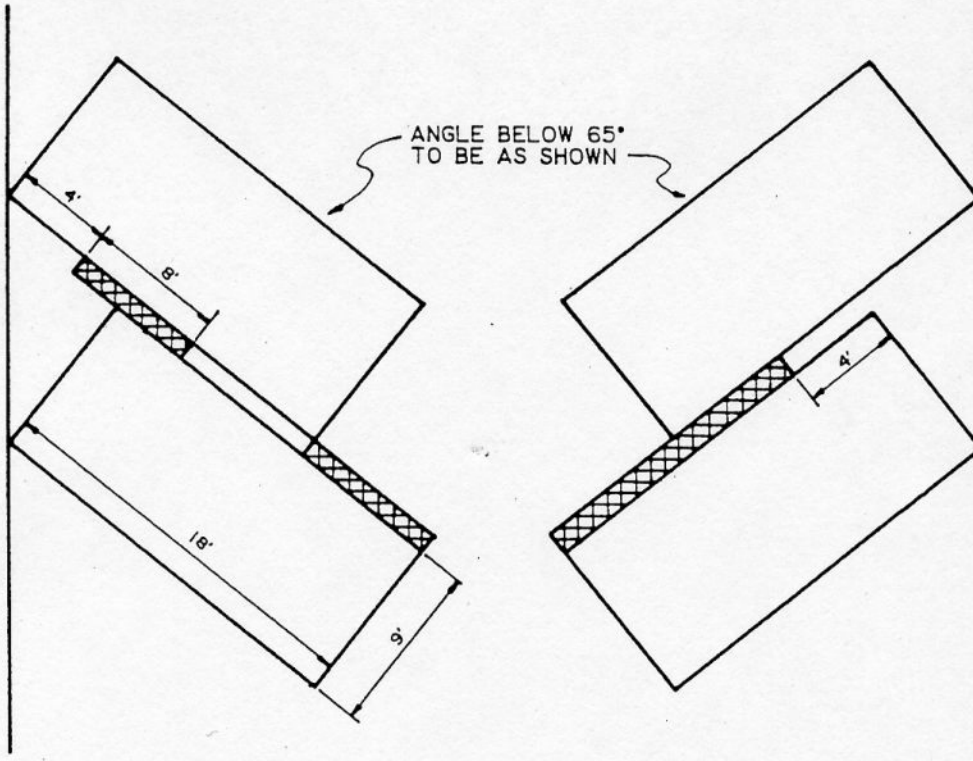
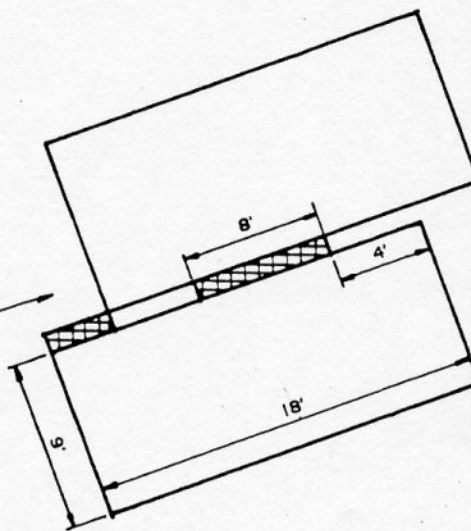


COLUMN PLACEMENT WITH ANGLE PARKING



ANGLE 65° TO 75°
TO BE AS SHOWN.
ANY ANGLE GREATER
TO USE 90° STANDARD.
(SEE SHEET NO. 1)



NOTES:

1. NO COLUMNS TO BE PLACED IN CROSS-HATCHED AREAS.
2. NO COLUMNS TO BE PLACED TO THE REAR OF ANY PORTION OF ANY SPACE.

CITY OF BURBANK - PUBLIC WORKS DEPARTMENT

REV	BY	DATE

COLUMN PLACEMENT

APPROVED BY: *Chris Sanjman* 6-1-92
Public Works Director Date

STANDARD PLAN
BT-405
SHEET 1 OF 1