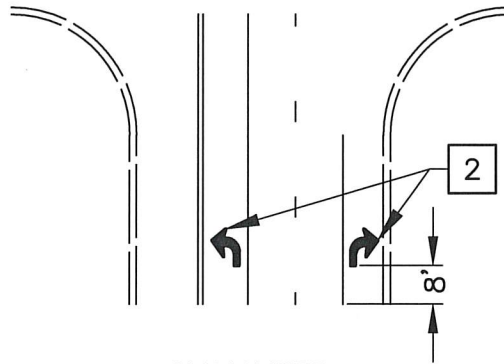
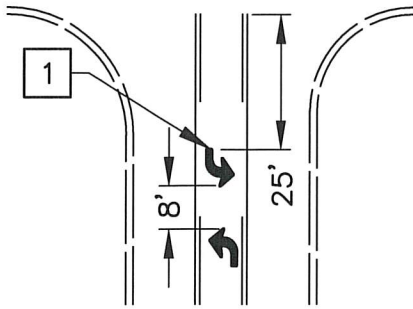


UNCONTROLLED INTERSECTION

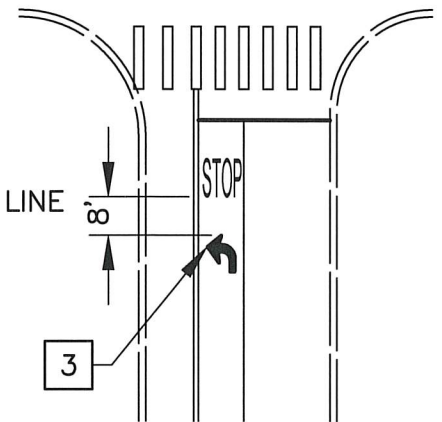
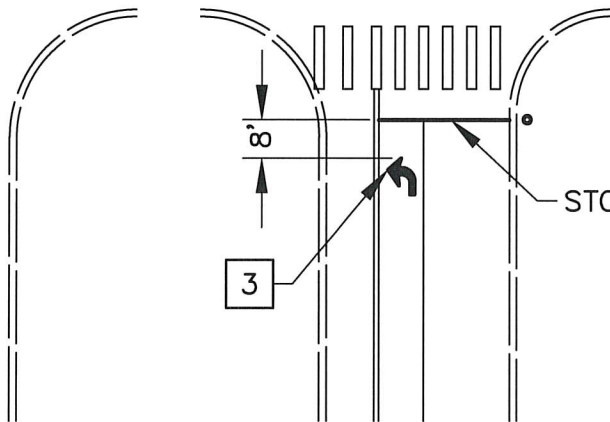
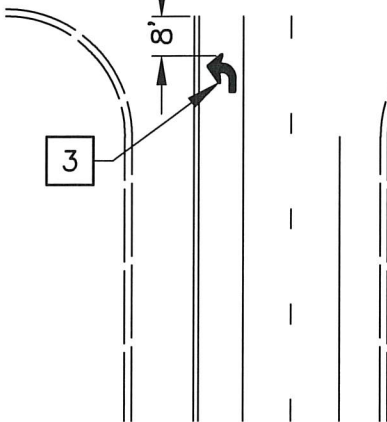
UNCONTROLLED INTERSECTION



UNCONTROLLED INTERSECTION

SIGNALIZED INTERSECTION

STOP CONTROLLED INTERSECTION



NOTES:

1. INTERSECTION WITH TWO-WAY LEFT TURN LANE, INSTALL TWO ARROWS 25 FEET FROM END OF STRIPE.
2. INTERSECTION WITH TURN LANE, INSTALL ONE ARROW 8 FEET FROM BEGINNING OF TURN LANE.
3. IF A TURN LANE IS LONGER THAN 60 FEET, INSTALL ONE ADDITIONAL ARROW 8 FEET FROM:
  - END OF STRIPE (UNCONTROLLED INTERSECTION)
  - STOPLINE (SIGNALIZED INTERSECTION)
  - "STOP" MARKING (STOP CONTROLLED INTERSECTION)

LEFT TURN LANE SHALL USE CALTRANS STANDARD PLAN A24A, TYPE IV(L) ARROW.

RIGHT TURN LANE SHALL USE CALTRANS STANDARD PLAN A24A, TYPE IV(R) ARROW.

CROSSWALKS SHALL BE INSTALLED PER BURBANK STANDARD PLAN BT-409A-1.

STOP LINES AND STOP MARKINGS SHALL BE INSTALLED PER BURBANK STANDARD PLAN BT-411-1.

**CITY OF BURBANK – PUBLIC WORKS DEPARTMENT**

REVIEW	INITIAL	DATE	PAVEMENT TURN ARROWS		STANDARD PLAN
	<i>hwb</i>	11/8/19	APPROVED BY:	<i>Judith Weeks</i>	BT-410-1
					SHEET 1 OF 1
				DATE	
				11/14/19	
				PUBLIC WORKS DIRECTOR	